

# En Masse

## Chain Conveyors



# 14 SERIES CHAIN CONVEYORS

DURABLE, DEPENDABLE AND EFFICIENT HANDLING CAPACITIES FOR A WIDE VARIETY OF MATERIALS WITH MINIMUM PRODUCT DEGRADATION. CAPACITIES FROM 3,000 - 13,000 BUSHELS PER HOUR.

## STANDARD FEATURES

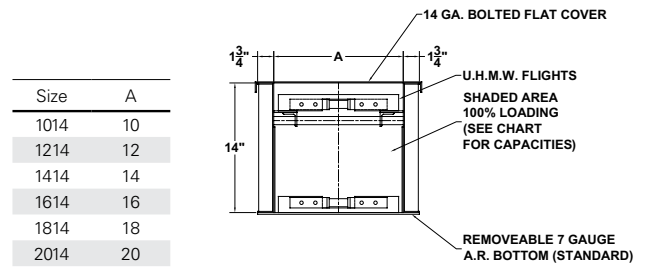
- Hardened tooth sprockets
- All pillow block bearings
- Shafts sized to application
- UHMW seals
- 1-Intermediate inlet & 1-head discharge
- Screw type take ups
- 11 GA. steel construction
- Powder Coat finish
- Removable bottoms
- Heavy welded steel conveyor chain
- Inspection doors on head & tail sections

## OPTIONS

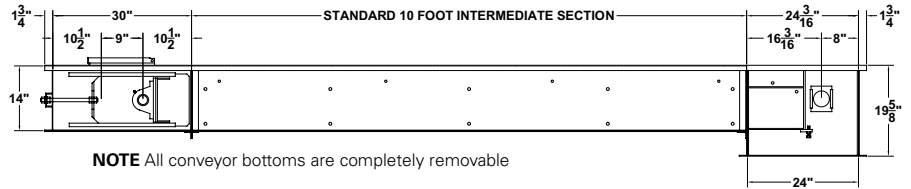
- A.R. steel bottom and side liners from 10 GA. - 3/8"
- Bend section/incline conveyors
- Split sprockets
- Hold down return rails or split pan design for inclined conveyors
- Limit switches
- Hot dipped galvanized option available
- Plus-Coat coating system available

## SPECIAL FEATURES

- Heavy welded steel conveyor chain with welded attachments and 3/8"- 5/8" UHMW flights assembled and placed in intermediate sections
- Drives sized for application and mounted to head section
- Drag leg attachment plates (1 set per 10' of conveyor length)



Size	A
1014	10
1214	12
1414	14
1614	16
1814	18
2014	20



NOTE All conveyor bottoms are completely removable

Size	1ft/min Bu/hr	100 ft/min Bu/hr	125 ft/min Bu/hr	150 ft/min Bu/hr	175 ft/min Bu/hr	200 ft/min Bu/hr
1014	33.3	3,330	4,166	5,000	5,833	6,666
1214	40.0	4,000	5,000	6,000	7,000	8,000
1414	46.7	4,670	5,837	7,000	8,172	9,340
1614	53.3	5,330	6,662	8,000	9,327	10,660
1814	60.0	6,000	7,500	9,000	10,500	12,000
2014	67.0	6,700	8,370	10,040	11,700	13,390

Size	0.005 m/s MT/h	0.51 m/s MT/h	0.64 m/s MT/h	0.76 m/s MT/h	0.89 m/s MT/h	1.02 m/s MT/h
1014	0.9	90	113	136	158	181
1214	1.1	109	136	163	190	217
1414	1.3	127	158	190	222	253
1614	1.4	145	181	217	253	289
1814	1.6	163	203	244	285	326
2014	1.8	182	227	272	317	363

NOTES Capacities in MT/hr are based on wheat at 0.77 MT/m3

# 20 SERIES CHAIN CONVEYORS

## STANDARD FEATURES

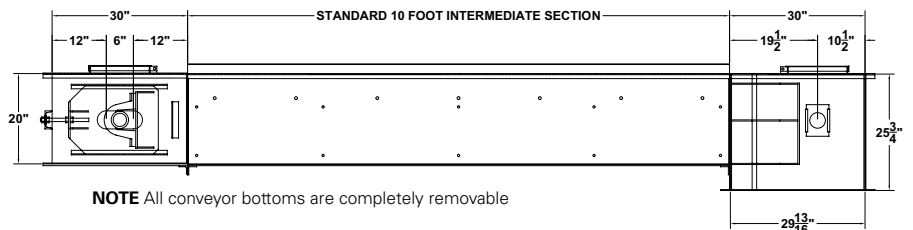
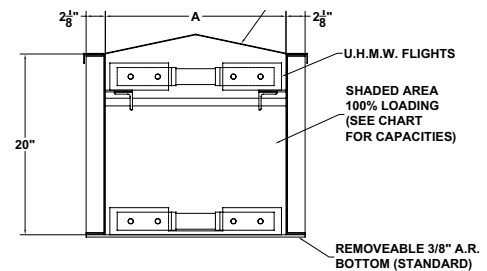
- Hardened tooth sprockets
- All pillow block bearings
- Shafts sized to application
- UHMW seals
- 1-Intermediate inlet & 1-head discharge
- Screw type take ups
- 11 GA. steel construction
- Powder Coat finish
- Removable bottoms
- Heavy welded steel conveyor chain
- Inspection doors on head & tail sections

## OPTIONS

- A.R. steel bottom and side liners from 10 GA. - 3/8"
- Bend section/incline conveyors
- Split sprockets
- Hold down return rails or split pan design for inclined conveyors
- Limit switches
- Hot dipped galvanized option available
- Plus-Coat coating system available

DURABLE, DEPENDABLE AND EFFICIENT HANDLING CAPACITIES FOR A WIDE VARIETY OF MATERIALS WITH MINIMUM PRODUCT DEGRADATION. CAPACITIES FROM 9,000 - 28,000 BUSHELS PER HOUR.

Size	A
2020	20
2420	24
3020	30



NOTE All conveyor bottoms are completely removable

**SPECIAL FEATURES**

- Heavy welded steel conveyor chain with welded attachments and 3/8" - 5/8" UHMW flights assembled and placed in intermediate sections
- Drives sized for application and mounted to head section
- Drag leg attachment plates (1 set per 10' of conveyor length)

Size	1ft/min Bu/hr	100 ft/min Bu/hr	125 ft/min Bu/hr	150 ft/min Bu/hr	175 ft/min Bu/hr	200 ft/min Bu/hr
2020	93.3	9,333	11,662	14,000	16,333	18,666
2420	112.0	11,200	14,000	16,800	19,600	22,400
3020	140.0	14,000	17,500	21,000	24,500	28,000
Size	1ft/min MT/h	100 ft/min MT/h	125 ft/min MT/h	150 ft/min MT/h	175 ft/min MT/h	200 ft/min MT/h
2020	2.5	253	316	380	443	506
2420	3	304	380	456	532	608
3020	3.8	380	475	570	665	760

**NOTES** Capacities in MT/hr are based on wheat at 0.77 MT/m3

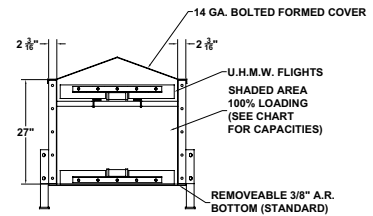


## 27 SERIES CHAIN CONVEYORS

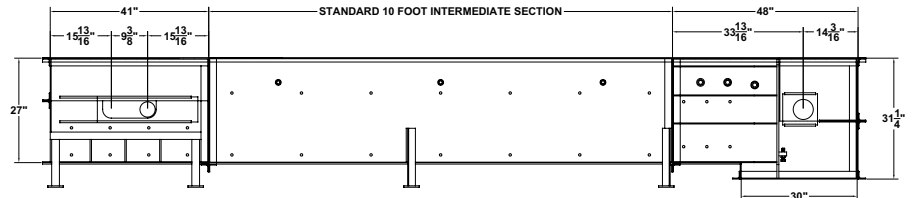
CAPACITIES RANGE FROM 15,000 - 60,000 BUSHEL PER HOUR.

Union Iron's "Mega" Conveyor is a heavy duty chain conveyor designed to handle the most severe applications for many years of trouble-free service.

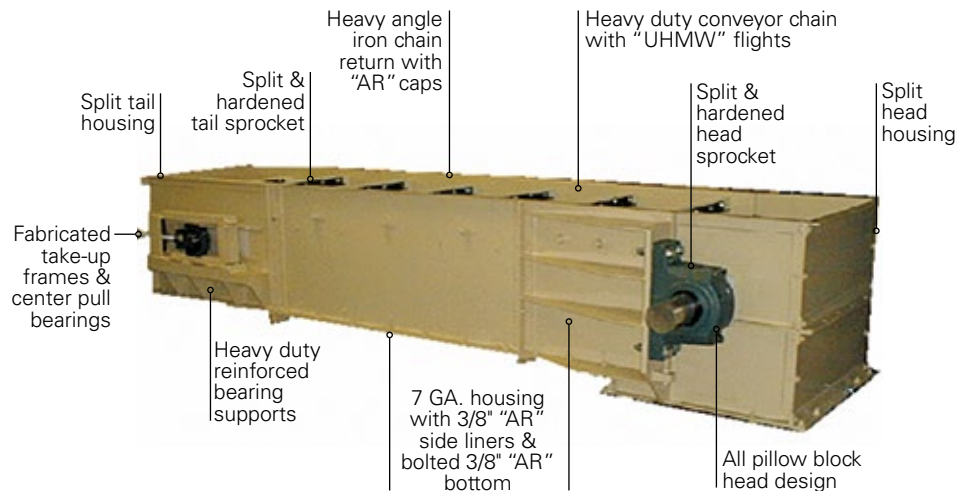
Conveyor sides and bottoms are equipped with 3/8" plate A.R. steel liners for extended life. 19 1/2" tall side liners are standard construction. All components are jig welded to assure interchangeability, further insured by strict Union Iron inspection.



Size	Bu/hr @ 1 FPM	Bu/hr @ 150 FPM	Bu/hr @ 200 FPM
24"	161	24,140	32,140
30"	201	30,130	40,173
32"	214	32,140	42,850
36"	241	36,160	48,210
42"	281	42,180	56,250
Size	MT/hr@ 0.005 m/s	MT/hr@ 0.76 m/s	MT/hr@ 1.02 m/s
24"	4.4	655	872
30"	5.5	817	1,090
32"	5.8	872	1,163
36"	6.5	981	1,308
42"	7.6	1,144	1,526



### HIGH CAPACITY CHAIN CONVEYORS





**UNION IRON is an AGI Brand.**

AGI is a leading provider of equipment solutions for agriculture bulk commodities including seed, fertilizer, grain, and feed systems with a growing platform in providing equipment and solutions for food processing facilities. AGI has manufacturing facilities in Canada, the United States, the United Kingdom, Brazil, South Africa and Italy and distributes its products globally.

# **AGI UNION IRON**

3550 E. Mound Road Decatur, IL USA 62526  
 1.800.333.5148 | sales@unioniron.com | unioniron.com